

CEREBELLAR METASTASIS FROM FOLLICULAR THYROID CARCINOMA

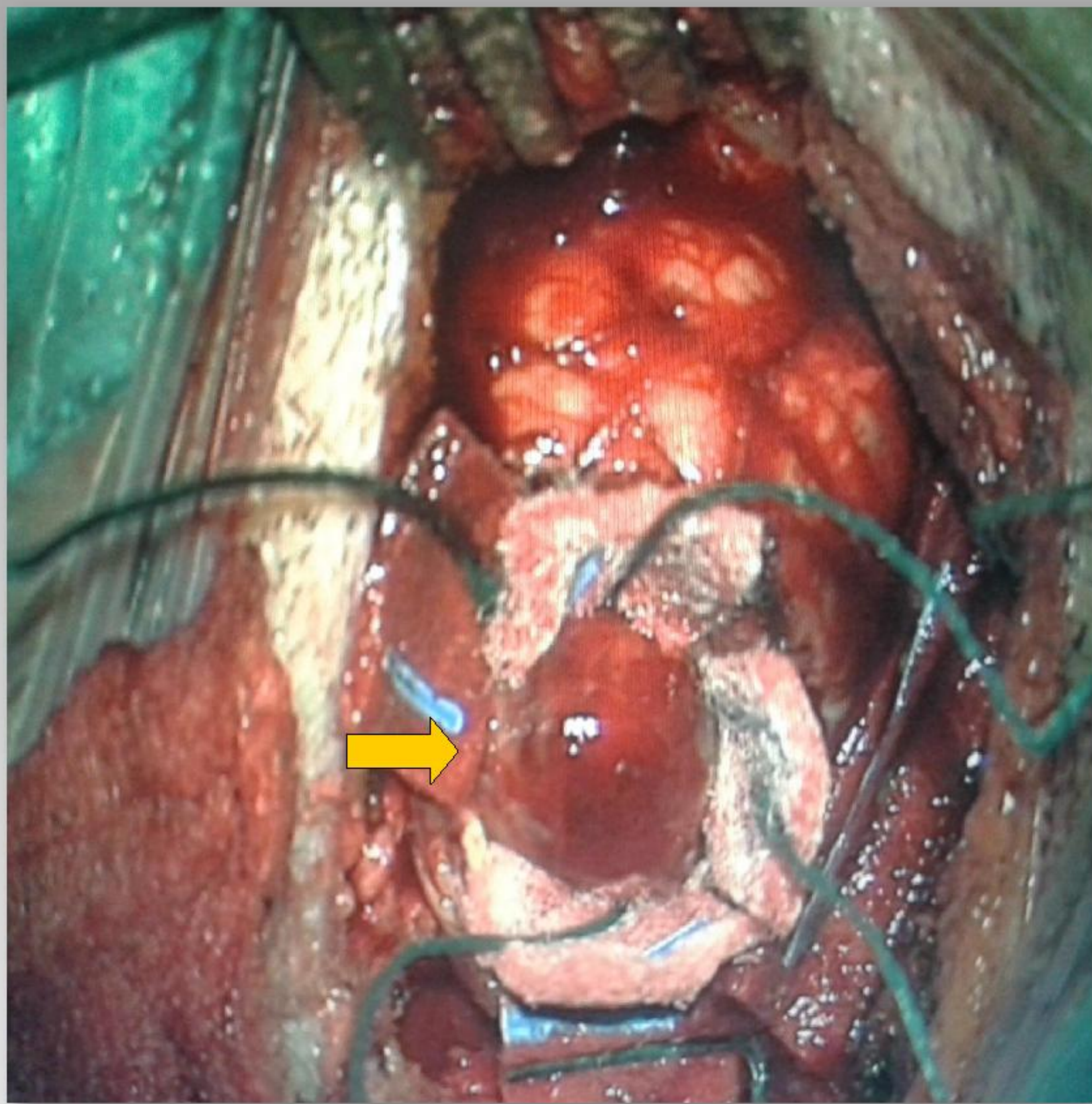
Authors: *Giovani A Rojas Martelo, Pedro Iglesias Lozano, Juan José Díez, Héctor G. Pian Arias, Víctor Rodríguez Berrocal Daniel Jiménez Zapata*

Hospital Universitario Ramón y Cajal, Madrid - Spain

OBJECTIVE

To our knowledge all reported cases of cerebellar metastases of differentiated thyroid carcinoma had their origin in a papillary carcinoma. Our goal has been to report a case of cerebellar metastasis whose histological and immunohistochemical study suggested the origin in a follicular thyroid carcinoma.

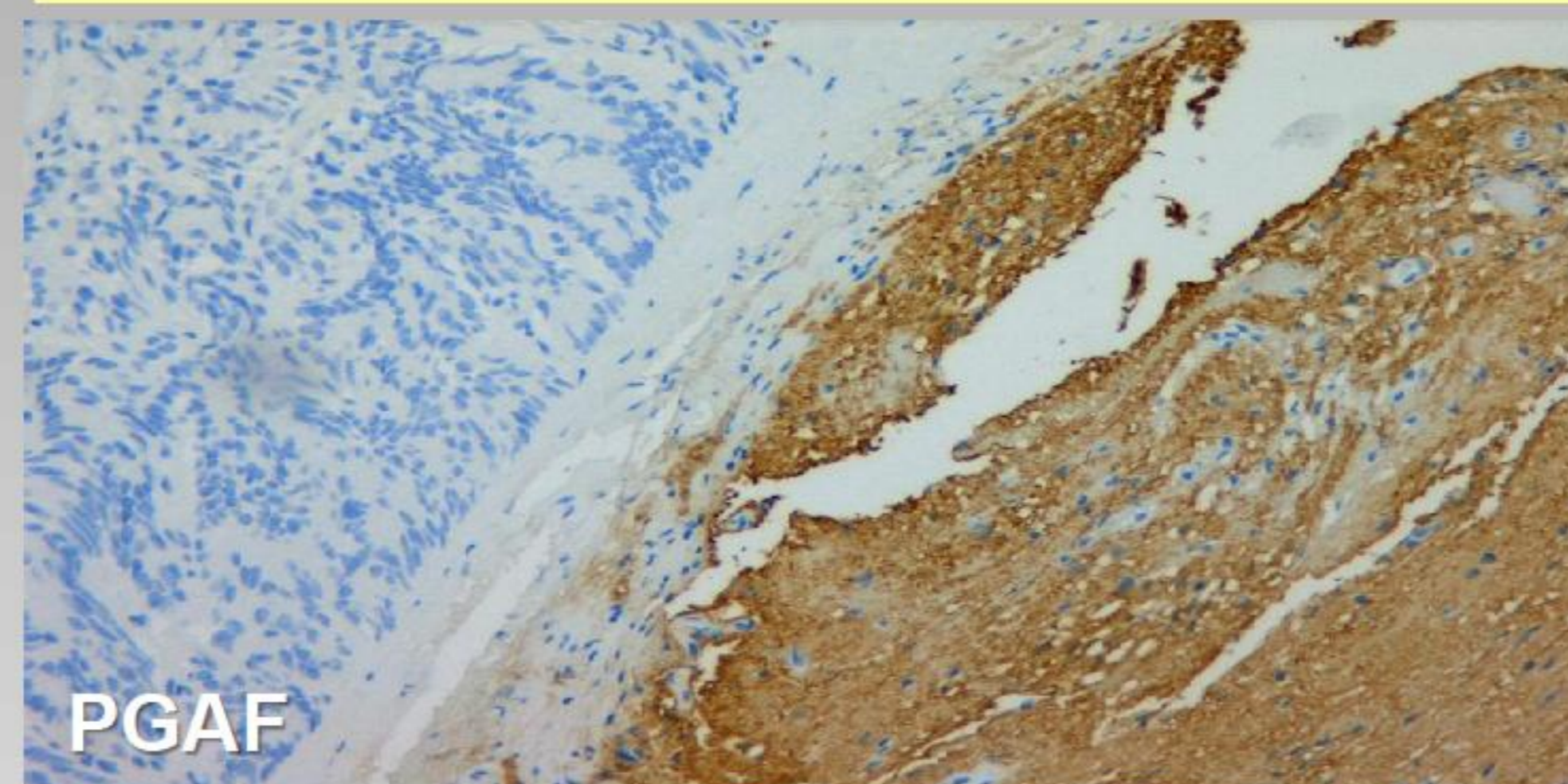
METASTASIS IN SITU



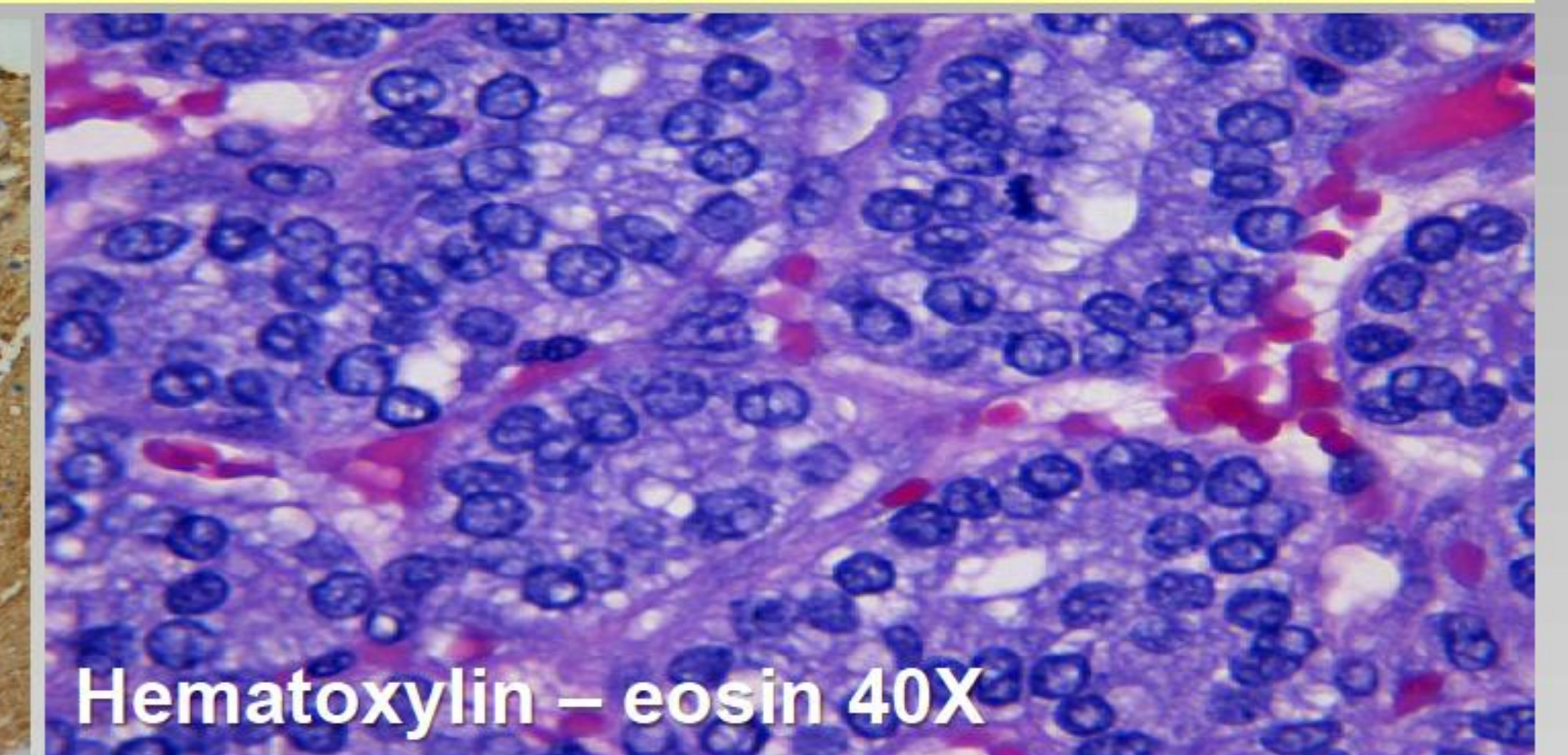
CASE REPORT

A 78 year-old woman who underwent total thyroidectomy 23 years ago showing an atypical thyroid adenoma in the left thyroid lobe in the pathological study. Serum thyroglobulin (Tg) levels were increasing in subsequent medical visits. Tg antibody levels were always negative. She received radioiodine therapy in several occasions. In the follow-up localizing study a whole body CT scan revealed an image at the left cerebellar hemisphere level. The patient underwent surgery of the cerebellar lesion. Immunohistochemical findings showed a thyroid origin of the metastatic lesion, with tumor cells with diffuse and intense positivity for cytokeratin-7 (CK7), thyroid transcription factor-1 (TTF-1) and Tg, focal and weak positivity for CK19, and negativity for PGAF, Galectin-3 and CK20. The analysis of V600K V600E BRAF gene mutations was negative.

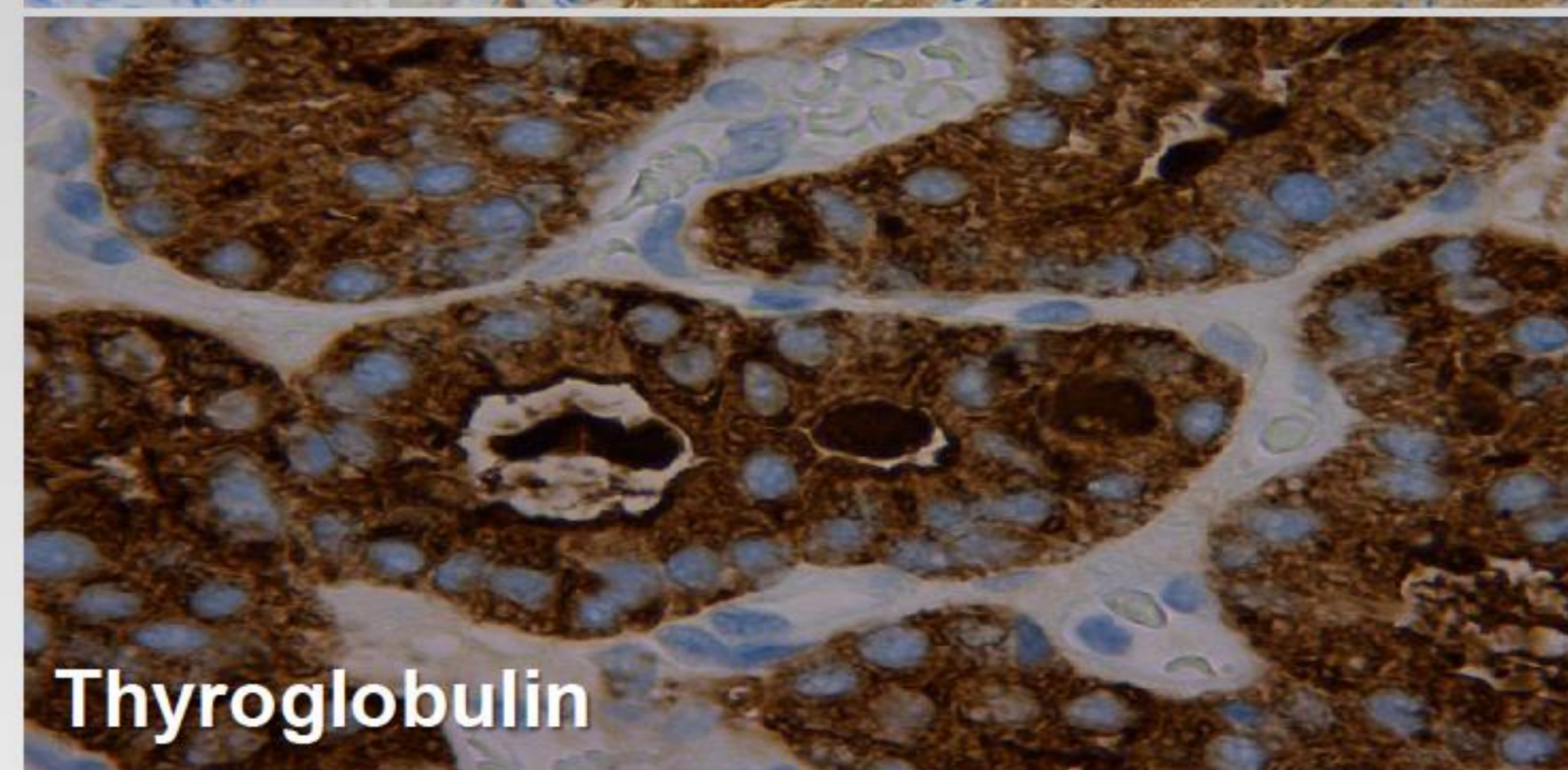
HISTOLOGY



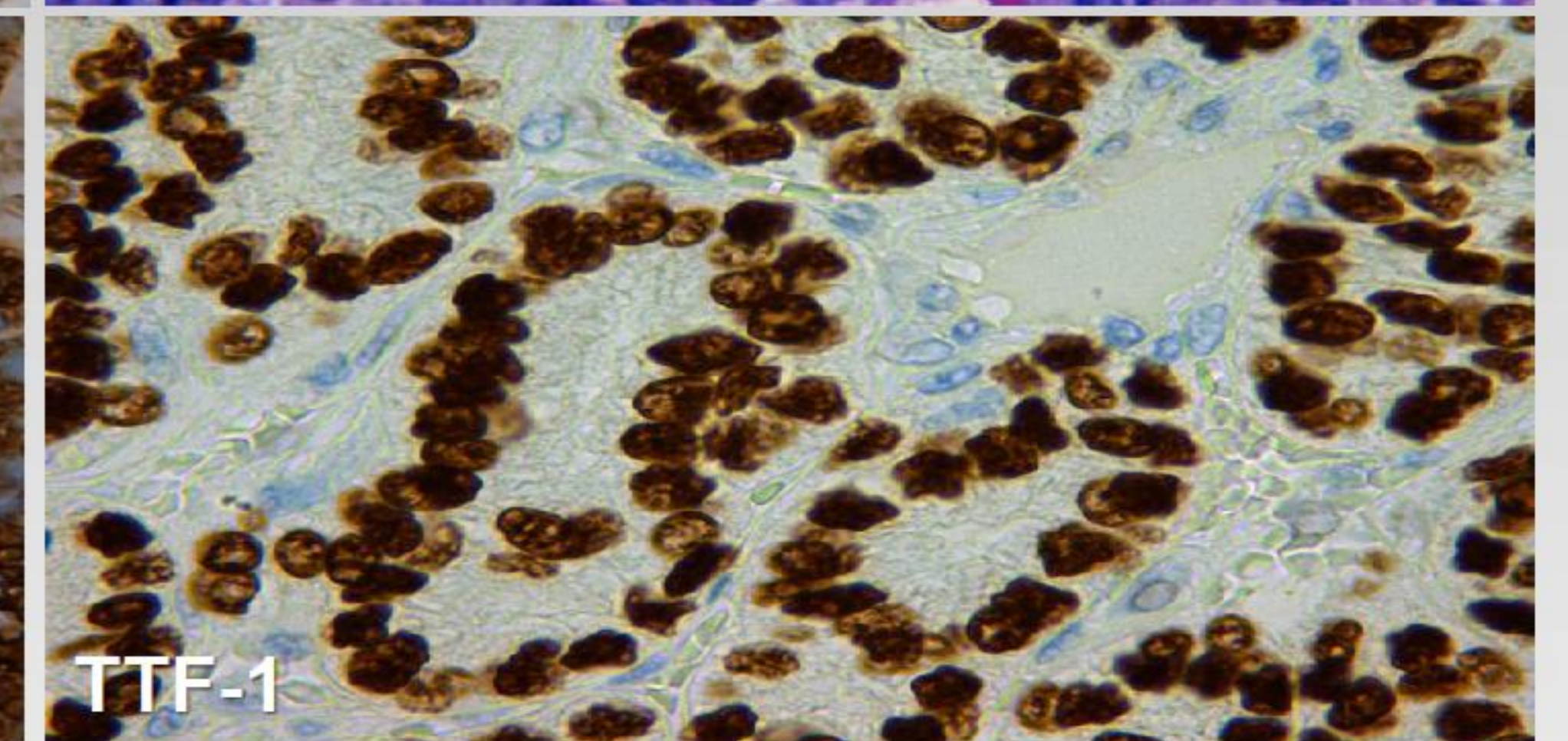
PGAF



Hematoxylin – eosin 40X

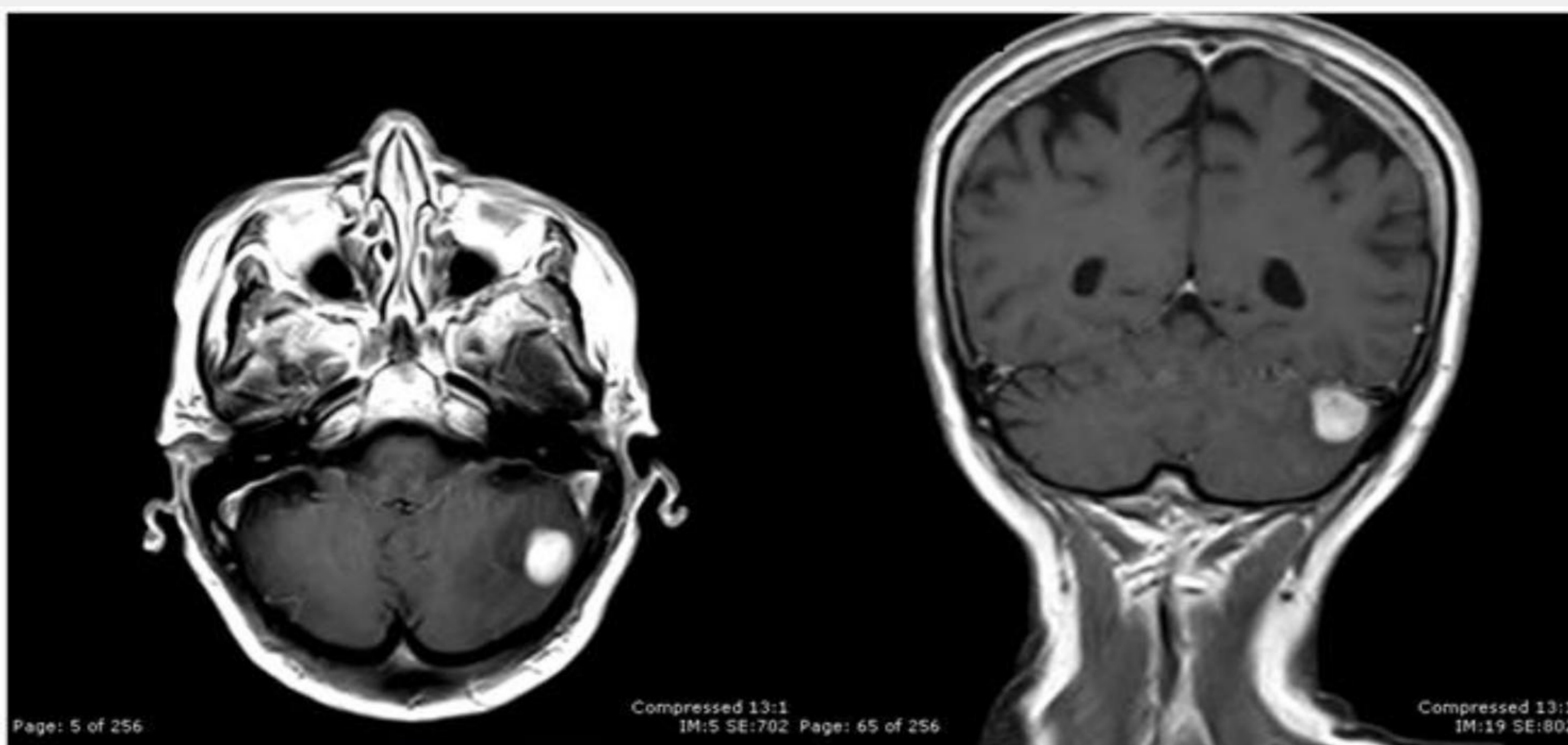


Thyroglobulin



TTF-1

MRI



CONCLUSION

We herein report the first clinical case of cerebellar metastasis from follicular thyroid carcinoma.

REFERENCES

1. D'Avanzo A, et al. *Cancer* 2004;100:1123–9.
2. Grebe SK, et al. *Endocrinol Metab Clin North Am.* 1995; 24: 761–801.
3. Song HJ, et al. *Endocr Relat Cancer.* 2011;18:165–74.
4. Misaki T, et al. *Ann Nucl Med.* 2000;14:111–4.
5. Pazaitou-Panayiotou K, et al. *Endocr J.* 2005;52:653–7.

