



CLINICAL IMPLICATIONS OF MEASURING PROLACTIN LEVELS IN MALES OF INFERTILE COUPLES



Lotti F., Corona G., Maseroli E., Rossi M., Silverii A., Degli Innocenti S., Rastrelli G., Forti G., Maggi M.
Sexual Medicine and Andrology Unit, Department of Experimental and Clinical Biomedical Sciences, University of Florence, Florence, Italy

Introduction. -The role of prolactin (PRL) in males is not clear.

- Animal models: PRL does not play a major role in male reproduction; however, trophic action on male accessory glands often observed.
- Studies in humans are scanty.

Aim. To systematically evaluate possible clinical and ultrasound correlates of PRL in males of infertile couples.

Methods: Out of 288 consecutive males of infertile couples, 269 (36.6 ± 4.4 years) without genetic abnormalities were studied.

All men underwent, during the same day, an evaluation of:

- clinical characteristics,
- scrotal and transrectal colour-Doppler-ultrasound (CDUS), before and after ejaculation,
- biochemical parameters
- semen parameters, including semen interleukin 8 levels (sIL-8)
- erectile function: IIEF-15-erectile function domain
- ejaculatory function: Premature Ejaculation Diagnostic Tool (PEDT)
- prostate-related symptoms: NIH-CPSI and IPSS
- psychological traits: Middlesex Hospital Questionnaire (MHQ)

Results:

1) Among semen parameters: only **positive** association between **PRL** and **ejaculate volume**, even adjusting for age, total testosterone and TSH (Fig. 1A)

2) In a logistic ordinal model, adjusting for the aforementioned confounders and ejaculate volume **PRL** was **negatively** associated with **delaying ejaculation**, according to PEDT#1 score (Wald=4.65, p<0.05) (Fig. 1B).

3) Among **scrotal and transrectal ultrasound** features:

positive association between **PRL** and **seminal vesicles (SV) volume** and inhomogeneity, before and after ejaculation, and with deferential ampullas diameter. (Fig. 2, A-D)

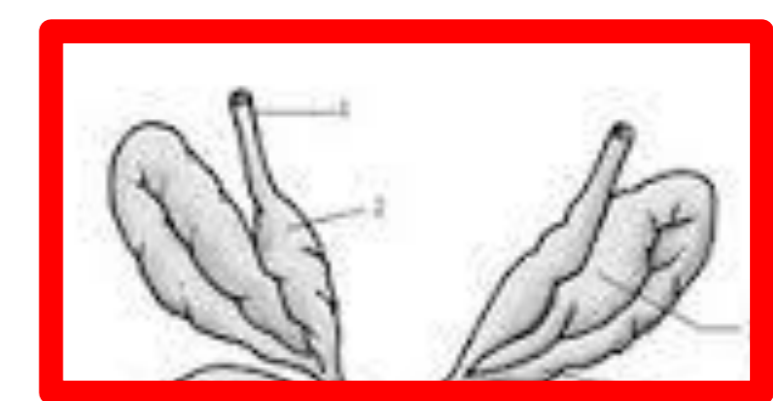
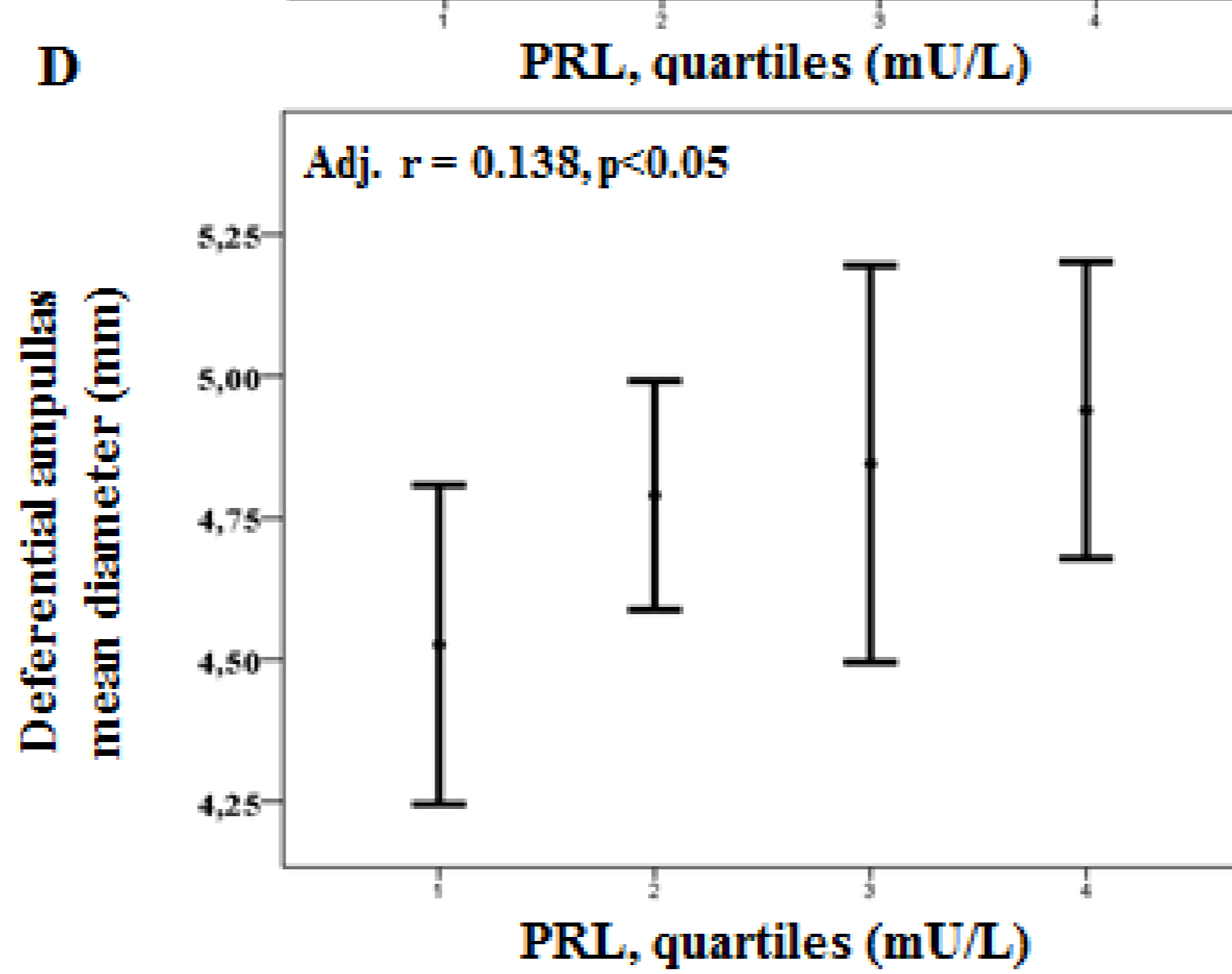
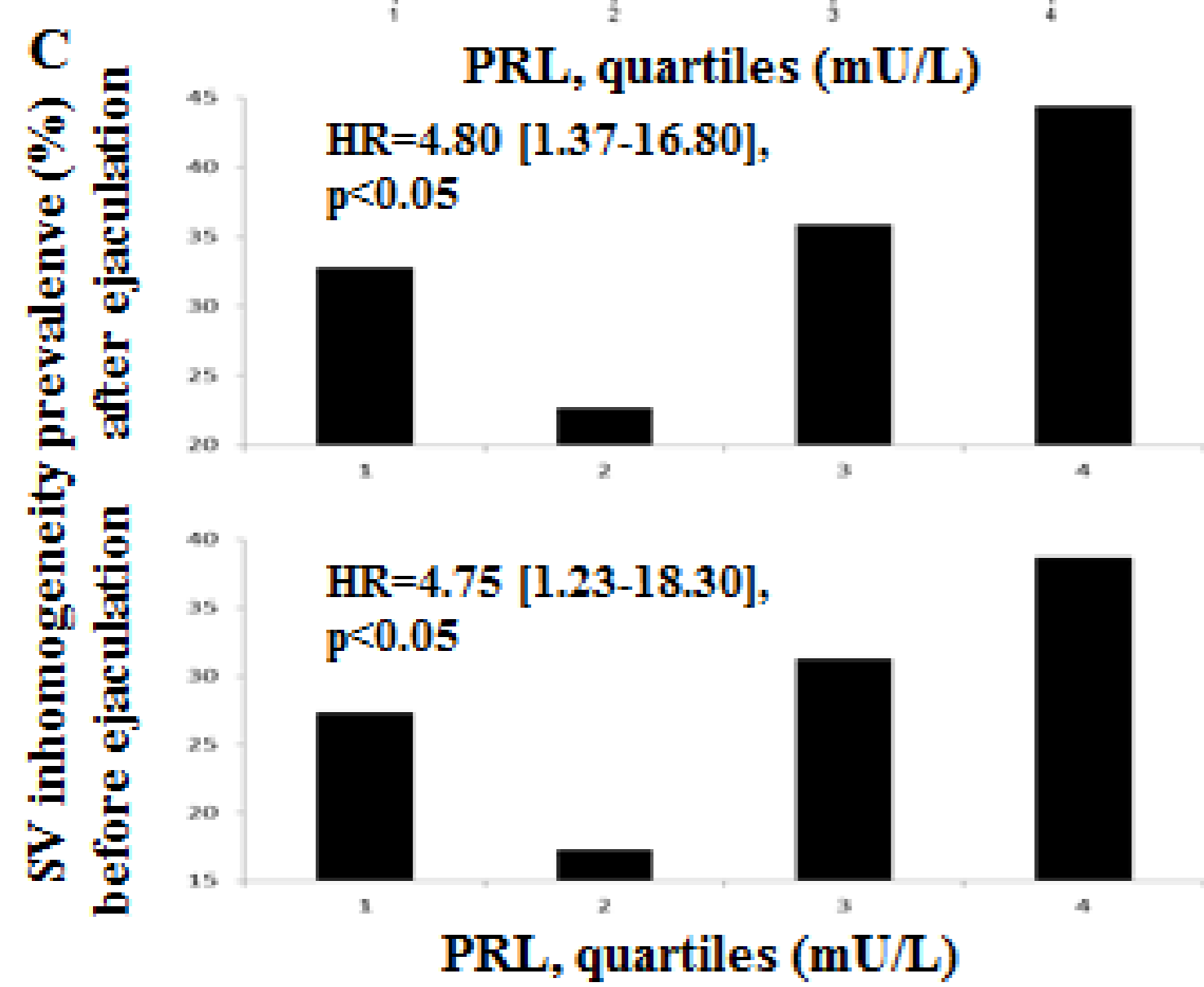
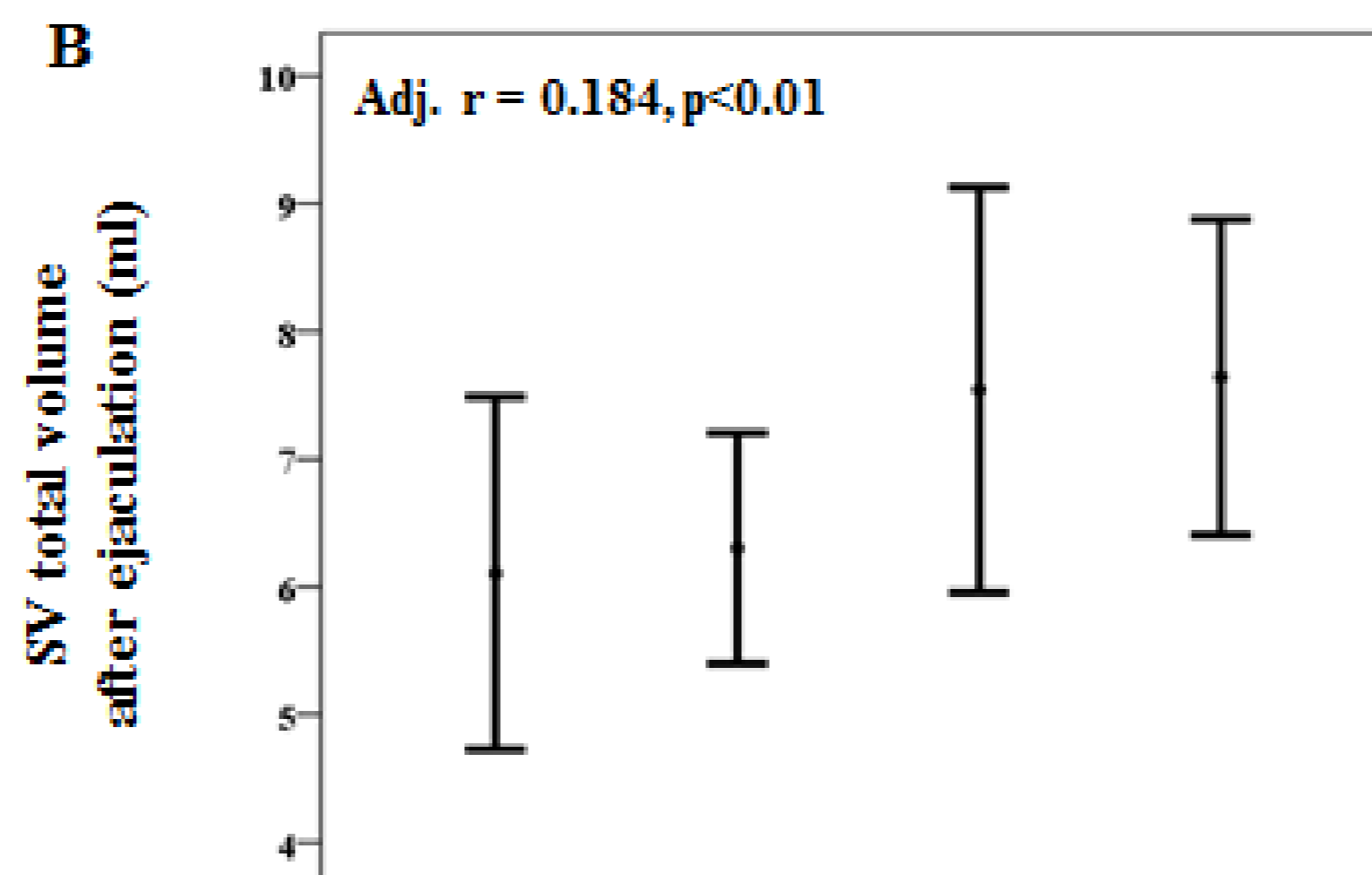
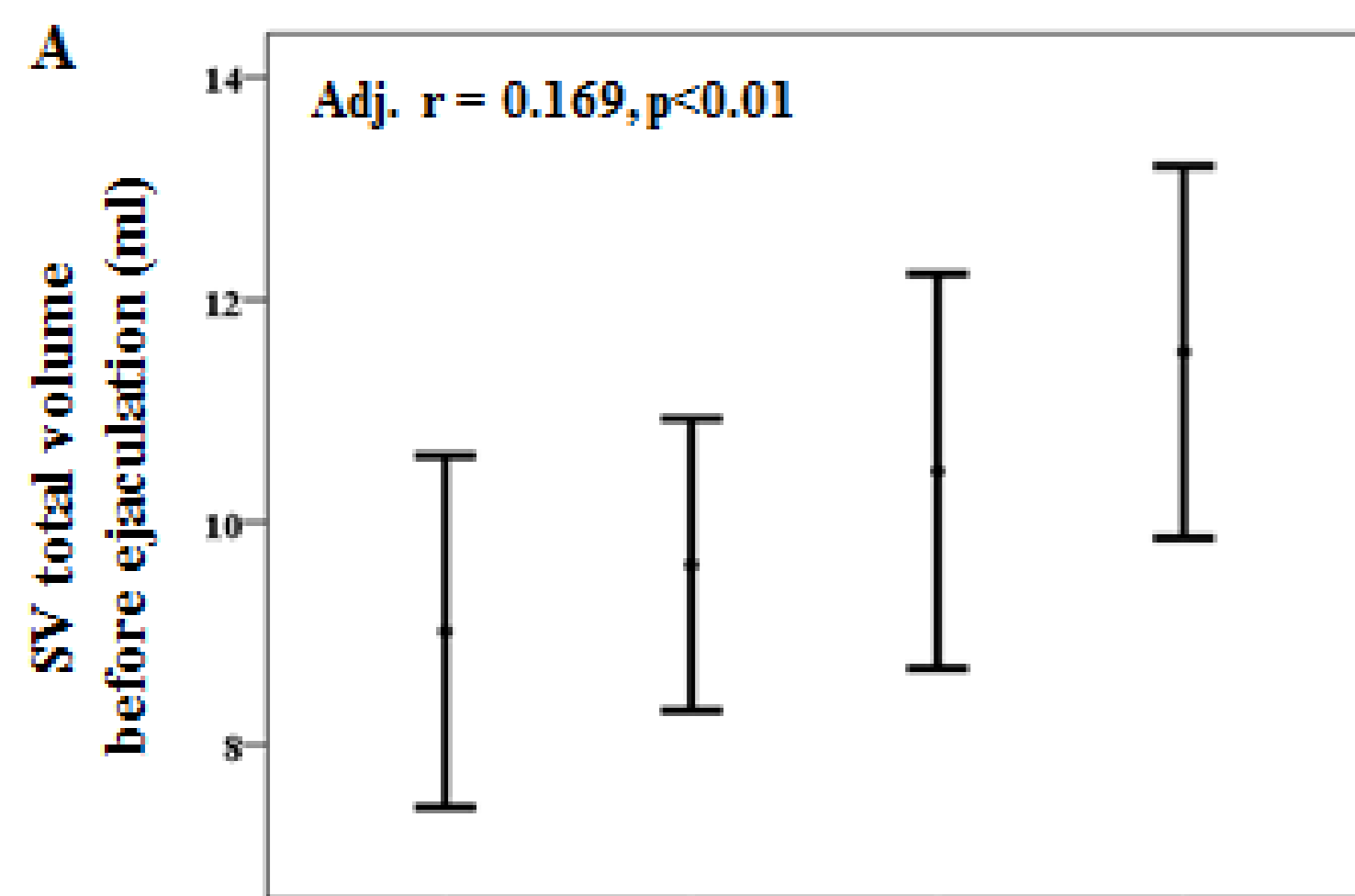
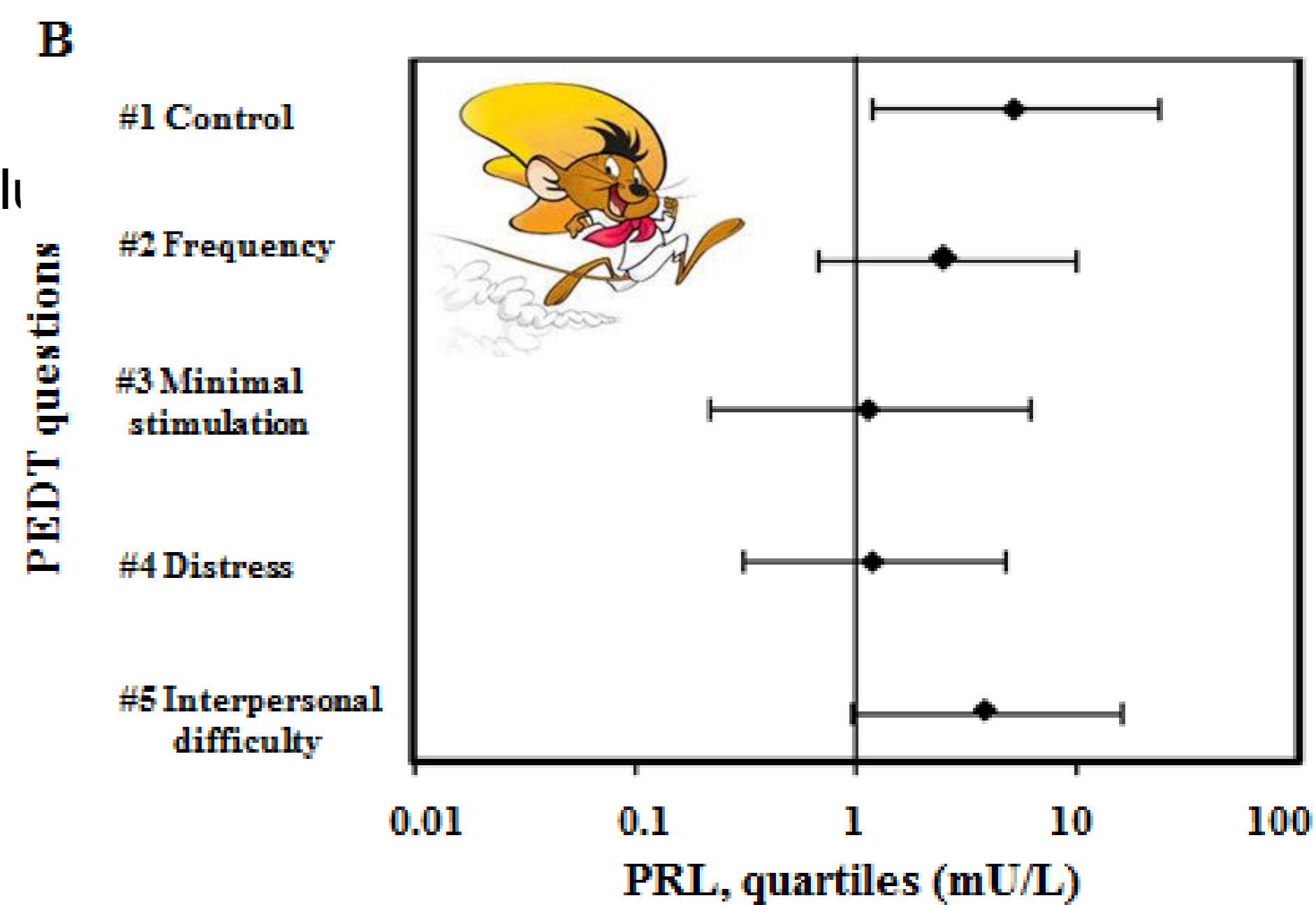
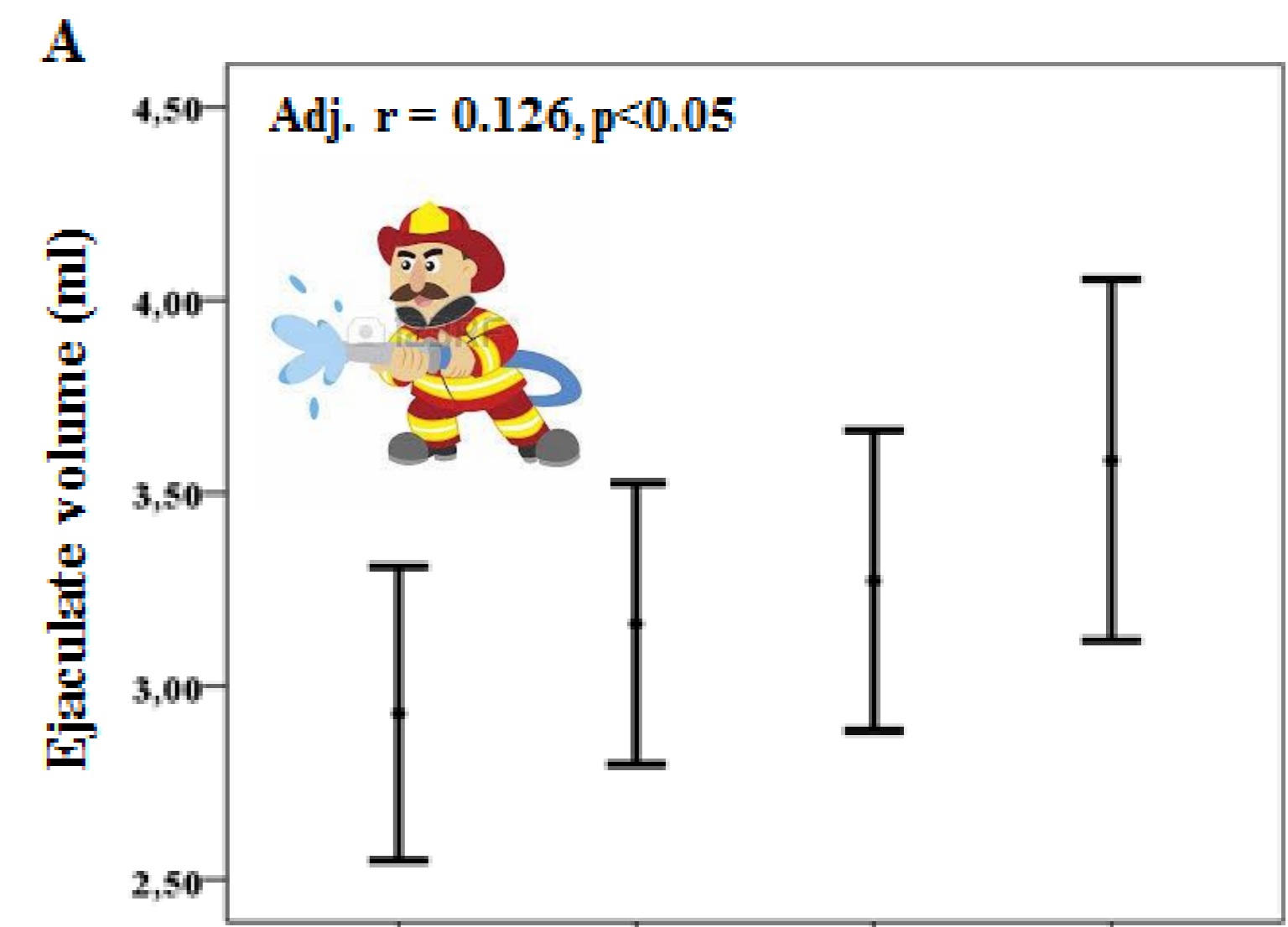
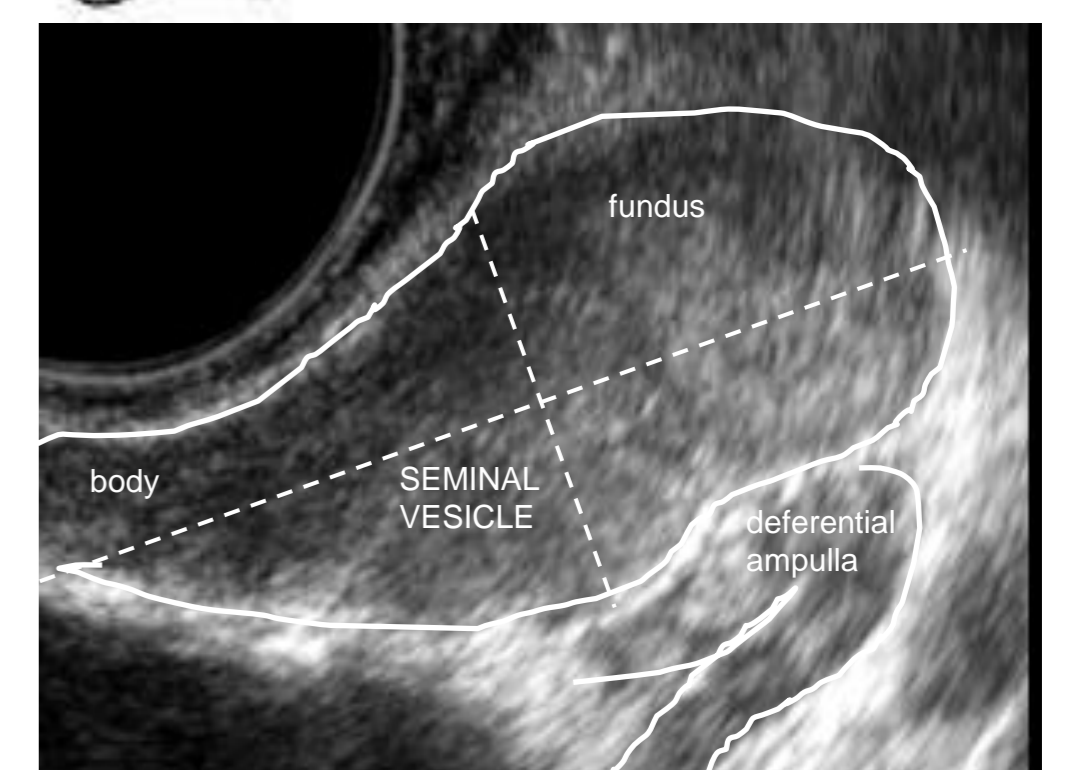


Fig.1



Fig.2



-Associations with PRL confirmed in nested 1:1 case-control analysis (Table) .
(case patients: subjects with PRL levels below 140 mU/L, which predicts a SV total volume below the median value of the cohort)

-No associations between PRL and other clinical parameters.

Conclusions.

-For the first time, this study extends the concept of a **trophic effect of PRL on male accessory glands** from animals to **humans**.

-We report a positive association among **PRL and ejaculate and SV volume**, before and after ejaculation.

-Low PRL is associated with a **lessened ability to control ejaculation**.

	Case patients (n=139)	Controls (n=139)	p
Age	37.4±7.6	37.3±7.6	0.968
Total testosterone (nmol/L)	16.6±5.6	16.2±5.7	0.587
TSH (mU/L)	1.6±0.9	1.9±1.5	0.108
Ejaculate volume (ml)	3.0±1.7	3.5±1.9	0.022
Sperm concentration, *10 ⁶ /ml	34.1±82.4	29.0±41.7	0.517
Spermatozoa per ejaculate, *10 ⁶ /ml	78.6±129.6	83.1±117.1	0.758
Sperm progressive motility, %	34.8±20.4	32.5±20.8	0.407
Sperm morphology, % normal forms	7.4±7.5	6.9±7.7	0.629
PEDT #1 score	1.4±1.1	1.1±1.0	0.045
PEDT #1 score ≥ 1 (%) (any failure in controlling ejaculation)	76.3	63.3	0.049
SV total volume before ejaculation at CDU	8.1 [4.7-12.8]	9.8 [6.6-14.6]	0.008
SV total volume after ejaculation at CDU	5.0 [3.0-7.8]	6.3 [3.7-10.8]	0.017
SV texture inhomogeneity before ejaculation (%) at CDU	27.3	41.7	0.012
SV texture inhomogeneity after ejaculation (%) at CDU	21.6	36.0	0.009
Deferential ampullas mean diameter (mm) at CDU	4.6±1.0	4.9±1.2	0.044

Table 3. Comparisons between subjects with prolactin (PRL) < 140 mU/L (case patients) and age, total testosterone, TSH-matched controls. Data are expressed as mean ± SD or as median (quartiles) when appropriate, and as percentages when categorical. TSH, thyroid-stimulating hormone; PEDT, Premature Ejaculation Diagnostic Tool (Symonds et al., 2007); SV, seminal vesicles; CDU, colour-Doppler ultrasound.