

N-TERMINAL PRO-BRAIN NATRIURETIC PEPTIDE – AN EARLY INDEPENDENT PREDICTOR OF ANTHRACYCLINE-INDUCED CARDIOMYOPATHY

Alina Mihaela Pascu, Alina Bisoc, Mariana Rădoi

“Transilvania” University of Brasov – Faculty of Medicine, ROMANIA

INTRODUCTION AND OBJECTIVES:

Early prediction of anticancer therapy cardiotoxicity is essential for applying proper preventive and supporting therapeutic strategies. Aim: to evaluate plasma N-terminal fragment of pro-brain natriuretic peptide (NT-proBNP) related to cardiac dysfunction assessed by transthoracic 2D echocardiography (2D-TTE) in patients with cancer and early onset asymptomatic anthracycline-induced cardiomyopathy (AIC).

METHODS:

Prospective study of 68 patients with cancer treated with anthracyclines, followed up for 6 months. Diagnosis of AIC was set at 6 months by the decrease of left ventricular ejection fraction (LVEF) below 50% or with more than 10 units or 20% from baseline. NT-proBNP and 2D-TTE were assessed at enrolment, and thereafter at 3 and 6 months.

RESULTS:

- Fifteen (22.1%) patients developed AIC at 6 months of anthracycline treatment (group 1), and 53 (77.9%) patients did not evolve with AIC (group 2).
- At 3 months, NT pro-BNP was significantly higher in patients from group 1 compared to group 2 [121.0 (119.8; 140.8) pg/mL vs. 97.7 (75.5; 111.7) pg/mL, $P = 0.0001$, values expressed as median (25th; 75th percentiles)].
- Left ventricular (LV) diastolic dysfunction was significantly more frequent in group 1 (93.3%) vs. group 2 (37.7%), $P = 0.0002$.
- NT-proBNP at 3 months proved accurate in predicting asymptomatic AIC at 6 months [area under the receiver operating characteristic curve (AUC) = 0.845, 95% Confidence Interval (CI): 0.735-0.954, $P=0.0001$]. New-installed diastolic dysfunction at 3 months had a sensitivity of 60 %, and a specificity of 77% in predicting AIC at 6 months (Figure 1).
- NT-proBNP assessed at 3 months above a cut-off = 118.5pg/mL was an independent predictor of AIC at 6 months.

CONCLUSION:

Plasma NT-proBNP at 3 months of anthracycline therapy proved to be an early independent predictor of asymptomatic anthracycline-induced cardiomyopathy.

© amp  © j&b

REFERENCES (Selective):

1. Cheitlin MD, Armstrong WF, Aurigemma GP, *et al.* ACC/AHA/ASE 2003 guideline update for the clinical application of echocardiography: summary article: a report of the American College of Cardiology/American Heart Association Task Force on Practice Guidelines (ACC/AHA/ASE Committee to Update the 1997 Guidelines for the Clinical Application of Echocardiography). *Circulation*. 2003; 108(9): 1146-1162.
2. Senju N, Ikeda S, Koga S, *et al.* The echocardiographic Tei-index reflects early myocardial damage induced by anthracyclines in patients with hematological malignancies. *Heart Vessels*. 2007; 22(6): 393-397.
3. Horacek JM, Vasatova M, Pudil R, *et al.* Biomarkers for the early detection of anthracycline-induced cardiotoxicity: current status. *Biomed Pap Med Fac Univ Palacky Olomouc Czech Repub*. 2014; 158: XX. (<http://dx.doi.org/10.5507/bp.2014.004>).
4. Eschenhagen T, Force T, Ewer MS, *et al.* Cardiovascular side effects of cancer therapies: a position statement from the Heart Failure Association of the European Society of Cardiology. *European Journal of Heart Failure*. 2011; 13: 1–10.

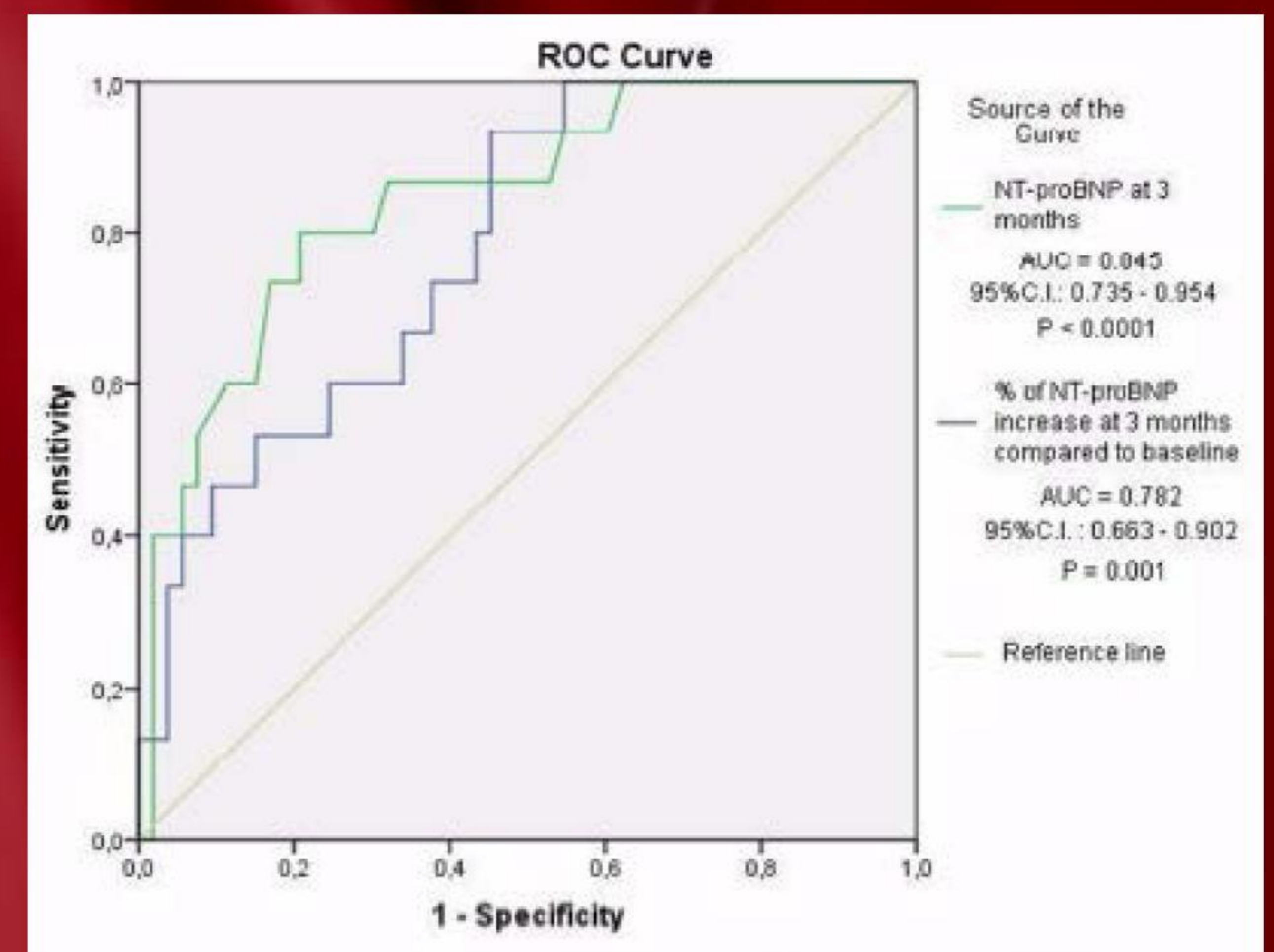


Figure 1. Receiver Operating Characteristic Curve plots for NT-proBNP at 3 months of anthracycline therapy (in green), and for the percentage increase of 3 months NT-proBNP from baseline (in blue) accuracy in predicting AIC

